
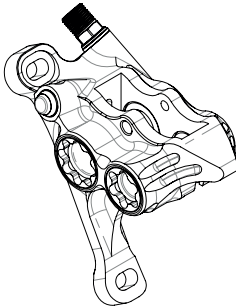


F140/160

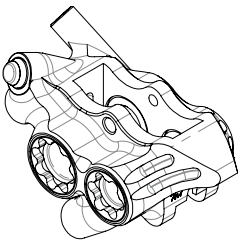
F160/180



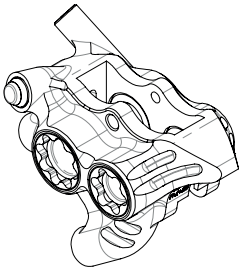
X2 | RX2 Caliper
Flat Mount STD



RX4+ Caliper
Flat Mount
Front +20



RX4+ Caliper
Flat Mount STD



RX4+ Caliper
Flat Mount +20

For Ø140 disc
X Mount
For Ø160 disc
Z Mount



For Ø160 disc
Direct Mount



For Ø140 disc
X Mount
For Ø160 disc
Z Mount
(Limited compatibility*)



For Ø160 disc
X Mount
For Ø180 disc
Not compatible



For Ø160 disc
X Mount
For Ø180 disc
Z Mount



For Ø180 disc
Direct Mount



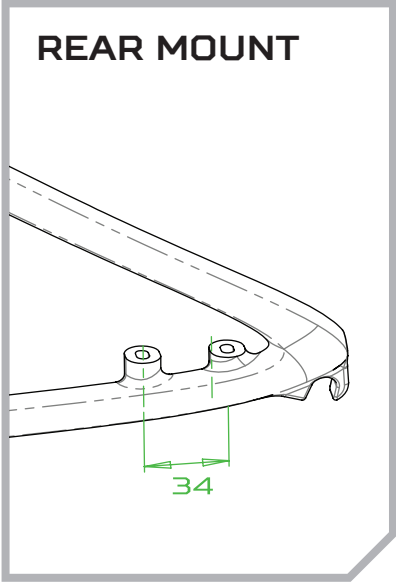
For Ø160 disc
X Mount
For Ø180 disc
Z Mount
(Limited compatibility*)



For Ø180 disc
X Mount
For Ø200 disc
Not compatible




*Access to mount upper screw can be limited.
Hexagonal head screw could be used.
Setup **not** recommended

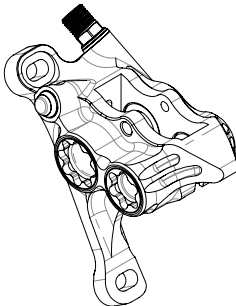


R140/160

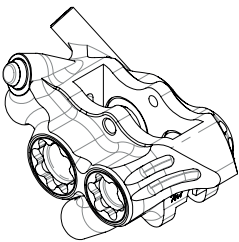
R160/180



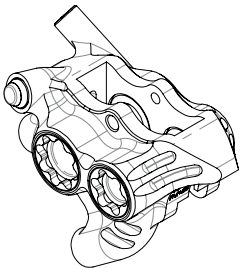
X2 | RX2 Caliper
Flat Mount STD



RX4+ Caliper
Flat Mount
Front +20





RX4+ Caliper
Flat Mount STD




RX4+ Caliper
Flat Mount +20


For Ø140 disc
Direct Mount
For Ø160 disc
Y Mount




For Ø140 disc
Direct Mount
For Ø160 disc
Y Mount




For Ø160 disc
Direct Mount



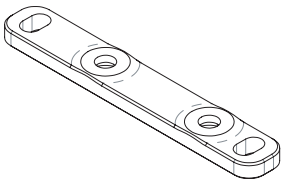
For Ø160 disc
Direct Mount
For Ø180 disc
Y Mount



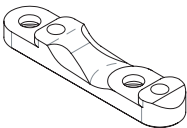
For Ø160 disc
Direct Mount
For Ø180 disc
Y Mount



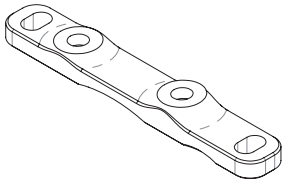
For Ø180 disc
Direct Mount



X MOUNT ref: HBMX



Y MOUNT ref: HBMY



Z MOUNT ref: HBMZ